

# QMX

## GOLD CORPORATION



TSXV: QMX  
FRA: OU2A



- HIGHLY SUCCESSFUL EXPLORATION
- EXCELLENT JURISDICTION
- FULLY FUNDED DRILLING PROGRAM

### Highly Prospective Land Package Covering ~200km<sup>2</sup> in Val d'Or, Quebec

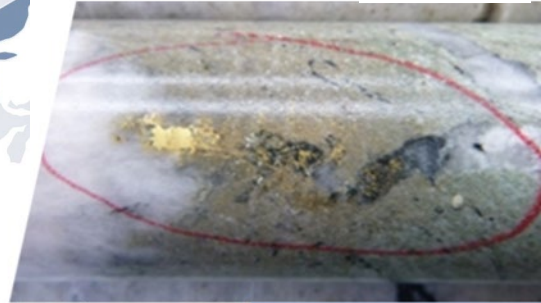
- Systematic and methodical approach to evaluating, targeting and drilling
- Currently drilling and evaluating multiple prospective targets
- Initial mineral resource estimate for Bonnefond deposit released - currently upgrading and expanding

### Permitted Mill and Tailings Facility

- Pursuing Custom Milling opportunities in Abitibi region - commercial production and bulk sampling agreements

### Prolific Mining Region

- Long history of discoveries in region and across land package
- Multiple past producing gold and base metal mines
- Recent discoveries by QMX, Eldorado Gold (previously Integra) and Probe Metals



### Bonnefond 2019 Resource: UPDATE EXPECTED SUMMER 2020

Open pit constrained resource  
Indicated - 258,700oz at 1.69 g/t Au  
Inferred - 145,100oz at 1.87 g/t Au

### 2020 Drilling Programs

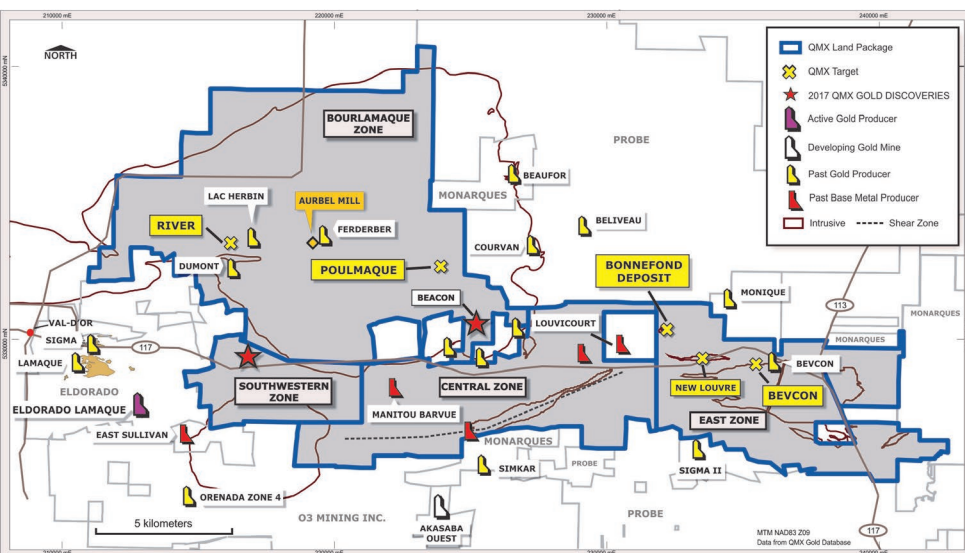
- Over 35,000m of drilling planned on:
  - Bonnefond Deposit
  - River Target
  - Poulmaque Target

### Supportive Corporate Shareholders

- Eldorado - 18% ownership
- Osisko Gold Royalties - 6% ownership
- Probe - 4% ownership
- O3 Mining & Eric Sprott are also Strategic Shareholders



### QMX Gold Val d'Or Mining Camp Property – 200 km<sup>2</sup>



Highly Successful Exploration  
In An Excellent Jurisdiction

### Bonnefond:

- 44.95g/t Gold over 6.5m
- 41.82g/t Gold over 3.4m
- 41.69g/t Gold over 4.3m
- 5.85g/t Gold over 6.7m
- 29.8g/t Gold over 3m
- 19.3g/t Gold over 3.2m
- 70.3g/t Gold over 2.3m
- 10.66g/t Gold over 11.2m
- 1.7g/t Gold over 131m
- 25.7g/t Gold over 6.9m
- 1.8g/t Gold over 96.8m
- 2.31g/t over 101.0m
- 1.9g/t Gold over 84m
- 13.2g/t Gold over 8.8m

### River:

- 38.7g/t Gold over 3.5m
- 39.8g/t Gold over 2.0m
- 34.9g/t Gold over 3.0m
- 17.7g/t Gold over 4.0m

### Beacon:

- 6.1g/t Gold over 5.4m
- 7.6g/t Gold over 3.0m

### Southwestern:

- 4.9g/t Gold over 3.2m
- 14.0g/t Gold over 0.7m

### New Louvre:

- 6.6g/t Gold over 3.7m
- 10.9g/t Gold over 2.5m
- 8.4g/t Gold over 4.5m
- 4.1g/t Gold over 5.2m

### Bevcon:

- 137.5g/t Gold over 3.7m
- 10.8g/t Gold over 4.3m

